

TELEFIRE

SNIPER

Central Building Security and
Management Software

A Journey
Through Our
Software

SNIPER: EMPOWERING BUILDING SECURITY AND OPERATIONAL EXCELLENCE WITH **UNIFIED SCREEN EXPERTISE AND VENDOR-AGNOSTIC FLEXIBILITY**

In the dynamic realm of building security and operational management, SNIPER emerges as a pioneering solution, seamlessly weaving together security software and building management into a cohesive, unified system. Crafted with precision, SNIPER distinguishes itself with an open architecture, facilitating effortless integration with leading manufacturers' equipment and Positioning itself at the forefront as an easy-to-implement solution for sophisticated security and operational management.

The SNIPER Advantage: Engineered for Excellence

At its core, SNIPER thrives on meticulous design, excelling in both security and operational efficiency. The open architecture not only ensures seamless integration with equipment from leading manufacturers but also elevates SNIPER beyond conventional boundaries.

Unified Integration for Seamless Operational Synergy

SNIPER's capabilities extend across a spectrum of applications, from Access Control to CCTV & Video Analytics, License Plate Recognition (LPR), Intrusion Detection, Fire Alarm, Weak Point Identification, Operational Systems Scheduling, and Optimization of Energy Consumption. This integrated software not only delivers real-time insights but also empowers users to actively control and intuitively manage diverse devices from a centralized location.

Versatility in Action

SNIPER's modular structure ensures seamless adaptation to installations of varying complexities. Whether for small, straightforward setups or demanding, complex solutions, SNIPER caters to diverse needs. It supports single or multi-site operations, accommodating low to high human traffic buildings and excels in highly protected facilities. The cross-application benefits of SNIPER intelligently leverage information to enhance overall system efficiency.

Self-Configuration Empowerment

Empowering users, SNIPER is equipped with a built-in Editing Tool for self-setting, configuration, and modification. This tool allows for easy management of alarms, notifications, users, permissions, devices, mapping, and real-time procedures, ensuring adaptability to evolving needs.

SNIPER SECURITY MONITORING & CONTROL: **FORTIFYING BUILDING PROTECTION**

Vendor Agnostic Connectivity

SNIPER Security excels in establishing connectivity, offering maximum flexibility to interface with third-party devices and protocols. This capability ensures that your security system is not limited by manufacturer constraints.

Open Technology for Seamless Integration

SNIPER Security's open technology enables swift integration, simplifying implementation, and ensuring project adaptability. This characteristic is crucial for the dynamic nature of modern security needs.

User-Friendly Interface Design

The user-friendly interface of SNIPER Security facilitates effortless navigation through the security system. Its intuitive design ensures seamless management and monitoring, contributing to operational excellence.

Verification and Investigation Tools

Effectively managing alarms, conducting thorough investigations of events, and expediting responses to various incidents are inherent capabilities of SNIPER Security. These verification and investigation tools enhance the overall security posture.

Communication Check Mechanism

SNIPER Security ensures consistent communication checks for terminal equipment and connected hardware. This proactive approach ensures the reliability of the security system.

Multi-Station Viewing Capability

Supporting simultaneous viewing from multiple stations across the complex, SNIPER Security provides relevant information from maps, cameras, and events. This feature enhances situational awareness and response capabilities.

Real-Time Event Management

SNIPER Security swiftly handles real-time alarms, enabling immediate actions to address the event's source. This real-time event management is critical for proactive security measures.

Event Investigation Capabilities

Gathering comprehensive information from the system and connected systems, SNIPER Security provides in-depth event analysis capabilities. This ensures thorough understanding and resolution of security incidents.

SNIPER BMS: ELEVATING BUILDING MANAGEMENT EXCELLENCE

Multi-System Integration

SNIPER BMS manages diverse building systems, including air quality, HVAC, electricity, lighting, and more. Its ability to seamlessly integrate with SNIPER Security Monitoring and Control and SNIPER Fire Detection sets the stage for a holistic approach to building management.

Scenario Building Mastery

Users can create and execute customized scenarios for optimal building operations. SNIPER BMS is designed to be adaptive, allowing users to tailor scenarios to meet specific needs.

Strategic Energy Planning

Strategic planning of energy use is a cornerstone of SNIPER BMS. It considers building structure, floor requirements, and specific needs to optimize energy consumption effectively.

Tailored User Customization

SNIPER BMS allows each user to choose displayed data, elements, and temperature ranges on the interface. This customization feature enhances user experience and ensures that information relevant to individual roles is readily available.

Seamless Connectivity

The seamless connection with various software and devices from different manufacturers highlights SNIPER BMS's commitment to integration. This ensures that your building management system is not siloed but connected to a wider ecosystem.

Integrated Security Monitoring

SNIPER BMS easily integrates with SNIPER Security Monitoring, Control and SNIPER Fire Detection, providing a unified screen for monitoring and controlling critical functions. This integration enhances overall efficiency and responsiveness.

Cross-Application Synergy

Leveraging information across applications is a key feature of SNIPER BMS. It enhances functionality and building efficiency, showcasing the interconnected nature of building management and security.

User-Friendly Interface Continuity

SNIPER BMS maintains a user-friendly interface, ensuring that both engineers and basic operators can navigate and utilize its features effectively.

SNIPER SYSTEM ARCHITECTURE: **SHAPING THE FUTURE**

Modular Design Flexibility

SNIPER's commitment to adaptability is showcased through its modular design, providing unparalleled flexibility to meet the varying complexities of installations. This modular approach is not just a design philosophy but a cornerstone that ensures scalability and customization based on specific site requirements. The agility embedded in SNIPER's modular architecture positions it as a solution capable of evolving with the dynamic needs of different environments.

Centralized Management Proficiency

Functioning as a centralized management software, SNIPER streamlines the complex task of controlling and monitoring integrated systems. This centralized approach eliminates the need for intricate, separate configurations, simplifying the overall management process. SNIPER's proficiency in centralized management provides users with a single point of access, fostering efficient control and monitoring of diverse systems from a unified interface.

Database Integration Efficiency

SNIPER goes beyond conventional monitoring by integrating a robust database system that collects comprehensive information from all connected systems. This approach enables real-time monitoring and historical analysis, empowering users with valuable insights into system performance over time. The efficient integration of databases enhances reporting capabilities, allowing for detailed analysis and informed decision-making.

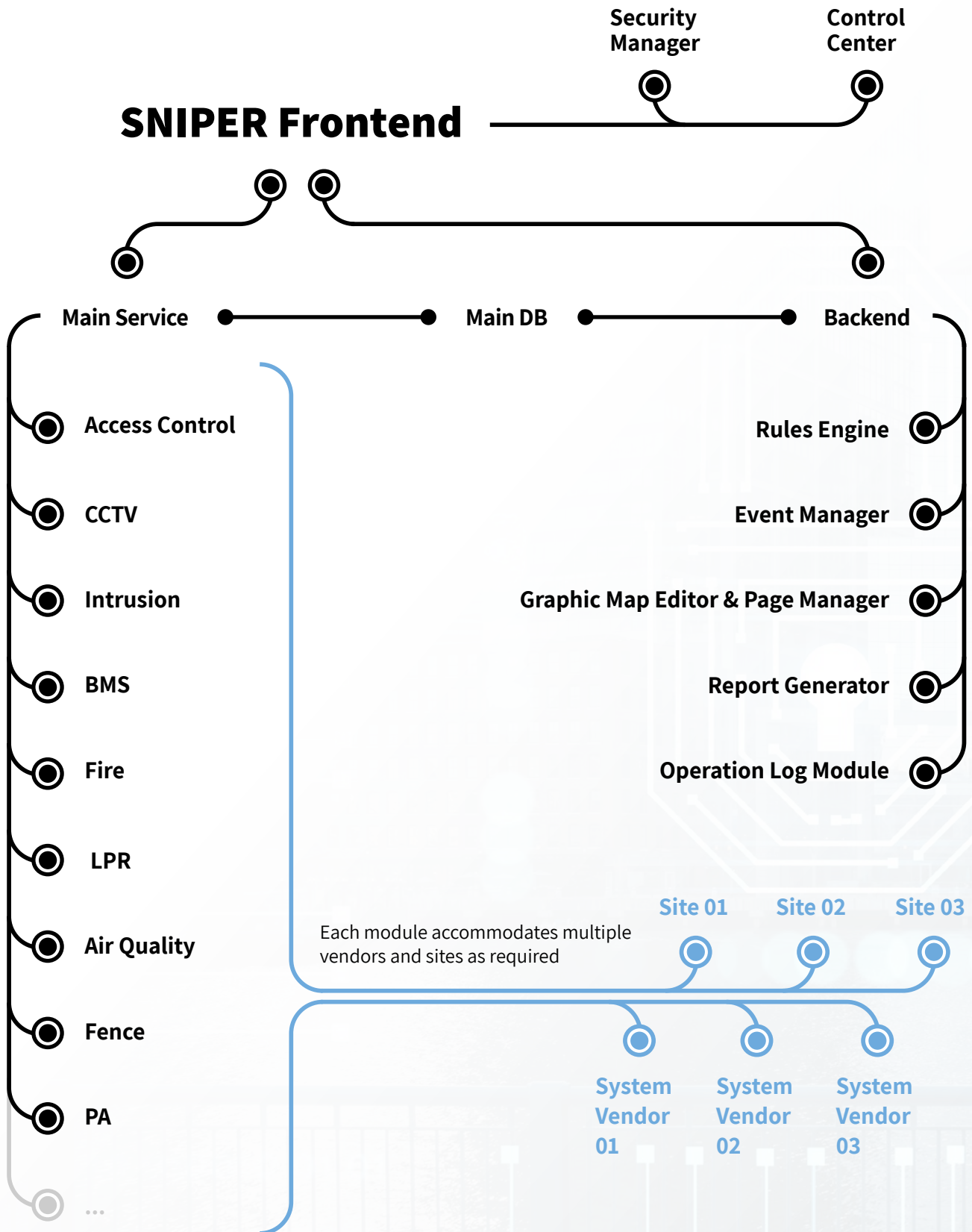
Scalability and Load Distribution Optimization

Recognizing the diverse demands placed on modern systems, SNIPER handles varying system loads with remarkable efficiency. The architecture is designed to optimize performance through distributed load mechanisms, ensuring that resources are utilized judiciously. Whether faced with increased workloads or fluctuations in system demand, SNIPER's scalable architecture adapts dynamically, guaranteeing enhanced performance under varying conditions.

Global Management Simplified: SNIPER's Centralized Control Across Time Zones

In an interconnected world where sites and devices span different time zones, SNIPER's centralized management takes center stage. This unique feature allows for a unified approach to system control, ensuring that operations are efficient and synchronized on a global scale. SNIPER's centralized solution for time zone management streamlines processes, optimizes resource utilization, and enhances overall system efficiency. By providing a cohesive framework for managing operations across diverse time zones, SNIPER establishes itself as a global leader in simplified and synchronized system control.

SNIPER SYSTEM ARCHITECTURE: **DIAGRAM**





In conclusion, SNIPER's System Architecture stands at the forefront of innovation, shaping the future of building security and operational management.

With its modular design, centralized management proficiency, database integration efficiency, scalability, and global management capabilities, SNIPER is more than a solution – **it's a strategic investment** in the efficiency and adaptability of systems.

As the world continues to evolve, SNIPER remains dedicated to anticipating and addressing the dynamic landscape of **building security and operational excellence.**

SNIPER USER INTERFACE: REVOLUTIONIZING OPERATIONS WITH INTUITIVE DESIGN

User-Friendly Interface and Self-Configuration

In its unwavering commitment to user-centric design, SNIPER places emphasis on providing an intuitive interface for unparalleled ease of use. The inclusion of a built-in editing tool takes user empowerment to the next level, enabling self-setting and customization. This user-centric approach not only enhances adaptability but also significantly elevates the overall user experience. SNIPER recognizes that flexibility and ease of use are integral to efficient operations.

Comprehensive Reporting Insights

SNIPER's dedication to providing comprehensive insights is exemplified through its centralized database, which facilitates detailed reporting and historical analysis. This comprehensive reporting is not just a feature; it's a cornerstone for informed decision-making. The ability to delve into the intricacies of security data ensures that users are equipped with a robust toolset for optimizing security measures and operational strategies.

Industry Protocol Support Assurance

In the fast-changing world of technology, SNIPER stands strong by working well with different types of technology standards. This means it easily fits in with various technologies, making it adaptable and ready for the future. SNIPER supports common technology standards like MODBUS, BACnet, Profinet, Saia, SNMP, and more. This dedication to being compatible with different technologies makes SNIPER a dependable and flexible choice, especially in a tech world that keeps evolving.

Adaptive Self-Configuration Capability

The user-friendly interface of SNIPER is not just about simplicity; it's about empowerment. Users can seamlessly adapt the system to changing requirements through an intuitive interface. The built-in editing tool provides users with the freedom to configure alarms, notifications, users, and real-time procedures according to evolving needs. This adaptability ensures that SNIPER remains agile and at the forefront of technological advancements, ready to meet the dynamic demands of security and building management.

Intuitive Event Management

SNIPER's interface goes beyond traditional event management systems by providing tools for clear event visualization, alarm history tracking, and comprehensive reporting. The intuitive event management system ensures that security professionals have not just data but meaningful insights for proactive measures. SNIPER transforms raw data into actionable intelligence, enhancing the overall security posture.

Robust Authentication and Security

Security is paramount in the design of SNIPER's user interface. Employing a robust three-factor authentication system, SNIPER ensures secure access to the system. This multi-layered authentication approach adds an extra layer of protection against unauthorized access, aligning with the highest security standards. SNIPER recognizes that a secure interface is foundational to building trust and confidence in its users.

Real-Time Monitoring Capabilities

In the fast-paced realm of security, real-time insights are non-negotiable. SNIPER's user interface is equipped with real-time monitoring and control capabilities, providing users with prompt insights into security device status. This feature enables swift responses to events, enhancing overall situational awareness and responsiveness. SNIPER ensures that users are not just monitoring but actively engaging with real-time data for immediate and effective actions.

Customizable Interface for Enhanced User Experience

Recognizing that each user has unique needs and preferences, SNIPER's user-friendly interface allows users to tailor their experience. By choosing displayed data, elements, and temperature ranges, users can personalize their interface, ensuring that information pertinent to their role is readily available. This customization feature promotes a more efficient and personalized user experience, contributing to heightened user satisfaction.

Advanced Scenario Integration

SNIPER's interface is not merely a passive observer; it actively facilitates operations through advanced scenario management. Users can create, modify, and execute predefined templates for various alarms, streamlining operations and fostering a proactive approach to security and building management. SNIPER's interface becomes a dynamic tool that adapts to user needs, enhancing operational efficiency.

Map Editor for Visual Navigation

Navigating security components is made seamless through SNIPER's customizable map editor within the interface. This visual representation enhances the user's ability to grasp the overall system layout, promoting efficient monitoring and control. SNIPER recognizes the importance of visual aids in complex systems and integrates features that simplify navigation, contributing to enhanced operational effectiveness.

Page Management for Effortless Navigation

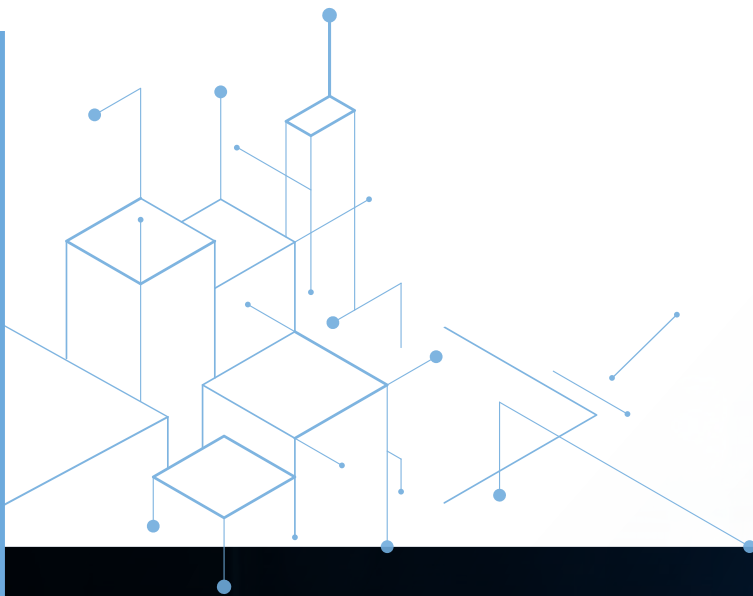
Efficiency in navigation is a priority for SNIPER's interface, and the inclusion of page management tools attests to this commitment. Users can efficiently manage interface pages, ensuring quick access to relevant information and functionalities. SNIPER's user interface becomes an intuitive tool, simplifying the user's interaction with the system and reducing the learning curve.

Dynamic System Alerts for Proactive Measures

Proactivity is ingrained in SNIPER's design, evident in the real-time alerts issued by its interface for system irregularities. This feature enables prompt response and issue resolution, ensuring that potential problems are addressed swiftly. The dynamic system alerts feature minimizes downtime, enhances overall system reliability, and underscores SNIPER's commitment to proactive security measures.

Continuous Adaptation to Evolving Needs

SNIPER's user interface is not static; it's a dynamic entity that evolves with changing requirements. The adaptive self-configuration capability, embedded within the user interface, allows users to modify and customize settings based on evolving needs. This adaptability ensures that SNIPER remains at the forefront of evolving security and building management needs, aligning with the ever-changing landscape of technology and user expectations.



In conclusion, SNIPER User Interface redefines the paradigm of streamlined operations by combining intuitive design with advanced features.

With an emphasis on user-friendliness, adaptability, and cutting-edge security measures, **SNIPER ensures that users have the tools they need** for efficient and proactive security and building management. As a user-centric solution, SNIPER anticipates the evolving needs of its users and stands as a testament to **innovation in the realm of operational excellence.**

A JOURNEY THROUGH OUR SOFTWARE: **IN SUMMARY**

SNIPER leads the way in building security and operational management. It offers a complete solution by seamlessly combining advanced security software with efficient building management.

SNIPER's winning trio of open architecture, modular design, and user-friendly interface makes it a game-changer, giving users easy control over their security and building systems. Whether the aim is to strengthen defenses against security threats or streamline building operations, SNIPER sets new benchmarks in excellence and adaptability.

This forward-looking solution, SNIPER, not only tackles current challenges but also foresees and addresses the changing needs of the dynamic building security and operational landscape. Its proactive approach ensures users have the tools and capabilities to navigate the evolving demands of security and operational management.

SNIPER isn't just a solution for today; it's a visionary foundation, paving the way for a resilient and flexible future in the intricate world of building security and operational excellence.